

MARYLAND STATE DATA CENTER

Governor's Grants
Training Conference
November 13, 2017

DATA SOURCES

- Census Data
- American Community Survey
- Census Estimates
- U.S. Bureau of Economic Analysis (BEA)
- Open Data Portal

DEPARTMENT OF PLANNING
MARYLAND STATE DATA CENTER

HOME CENSUS ACS ESTIMATES PROJECTIONS JOB/INCOME MAPS/GIS ECON & AG CENSUS MDP

Search

Popular Links

- > Sustainability Indicators
- > Zip Code Maps
- > Maryland Statistical Handbook
- > Population Estimates
- > Median Household Income Estimates
- > Projection Profiles
- > Parcel PFA Data
- > PFA Census Data Analysis
- > EEO Report

Quick Links

- > State Data Center Staff
- > State Data Center Affiliate Meetings and Presentations
- > Building Permit Data
- > 2012 Statistical Abstract
- > 2011-2015 ACS Socioeconomic Characteristics for Maryland's Legislative

MARYLAND STATE DATA CENTER

The Maryland State Data Center (SDC) is an official partner with the U.S. Census Bureau. The Maryland Department of Planning coordinates the SDC program in Maryland.

The SDC monitors development trends, analyzes social, economic and other characteristics and prepares population, housing, employment, labor force, and income projections, which provide the baseline for planning for growth and development in the State.

Subjects Index

A	B	C	D	E	F	G	H	I
J	K	L	M	N	O	P	Q	R
S	T	U	V	W	X	Y	Z	all

County Specific Data

Allegany

What's New?

- > 2011 to 2015 Multi-Year American Community Survey 5-year Estimates for All Geographies
- > 2015 Estimates by Age, Race and Gender for Maryland and its Jurisdictions
- > FHFA Home Price Index for Maryland & its Regions for 1st Quarter 2016
- > 2015 Population Estimates for Maryland's Municipalities
- > IRS state-to-State Migration 2014
- > 2016 New Housing Units Authorized for Construction Reports : March & First Quarter
- > State Quarterly Personal Income Through The 4th Quarter of 2015
- > Wage & Salary Jobs by Place of Work Through 2015
- > 2015 Population Estimates for Maryland's Jurisdictions

More on What's New? >>

Popular Links

- › Sustainability Indicators
- › Zip Code Maps
- › Maryland Statistical Handbook
- › Population Estimates
- › Median Household Income Estimates
- › Projection Profiles
- › Parcel PFA Data
- › PFA Census Data Analysis
- › EEO Report

Quick Links

- › State Data Center Staff
- › State Data Center Affiliate Meetings and Presentations
- › Building Permit Data
- › 2012 Statistical Abstract
- › 2011-2015 ACS Socioeconomic Characteristics for Maryland's Legislative Districts
- › 2011-2013 ACS Socioeconomic Characteristics for Maryland's Jurisdictions

On-line Mapping



Map Application:
2011-2015 American
Community Survey with
Coefficient of Variation

American Community Survey

The American Community Survey (ACS) is an ongoing, nationwide, monthly survey covering approximately three-million households each year and is now the source for all of the socioeconomic data that was formerly obtained from the decennial census. ACS data is available for three types of releases depending on population size: annually, three-year periods and five-year periods.

Annual ACS data are available for all geographies (e.g., U.S., states, counties, municipalities, places) with a population of 65,000 or more.

Three-year period ACS estimates are available for all geographies with a population of 20,000 or more.

Five-year period ACS estimates are available for all geographies down to census tracts and block groups.

Data and Reports

› [Comparing ACS Data to Census and to Other ACS Data](#)

› [Cautions, Documentation and Guidelines on Using ACS Data](#)

› **ACS Annual Data (population of 65,000 or more for all geographies):**

[2016](#) | [2015](#) | [2014](#) | [2013](#) | [2012](#) | [2011](#) | [2010](#) | [2009](#) | [2008](#) | [2007](#) | [2006](#) | [2005](#) | [2004](#) | [2003](#) | [2002](#)

› **ACS Three-year Data (population of 20,000 or more for all geographies):**

Note: The Census Bureau has discontinued the three-year ACS data. The last three-year data release was for the 2011-2013 period. There will be no more three-year data releases.

[2011-2013](#) | [2010-2012](#) | [2009-2011](#) | [2008-2010](#) | [2007-2009](#) | [2006-2008](#) | [2005-2007](#)

Socioeconomic Characteristics for Maryland's Jurisdictions and Places:

› **ACS Five-year Data (data available for all geographies down to census tracts & block groups):**

[2011-2015](#) | [2010-2014](#) | [2009-2013](#) | [2008-2012](#) | [2007-2011](#) | [2006-2010](#) | [2005-2009](#)

INTERACTIVE CENSUS AND ACS MAP

Census by Tract

How To
Overview
Contents

Census by Tract

The Census is a complete count of all persons living in the United States mandated by the U.S. Constitution. The population is counted every 10 years and the results are used to allocate Congressional seats, electoral votes, and government program funding. The most recent census was held in 2010.

The data collected on the short form survey are general demographic characteristics such as age, race, ethnicity, household relationship, housing vacancy, and tenure (owner/renter).

The units of geography used for the 2010 Census maps displayed here are the census tract - a small statistical area within a county which is delineated every 10 years prior to the decennial census.

For additional data, maps, and charts from the 2010 Census data, go the MD State Data Center's 2010 Census website at <http://www.census.gov>.

For additional census and other statistical related data please visit the MD State Data Center home page at <http://planning.maryland.gov/msdc>.

Census by ZCTA

ACS by Tract

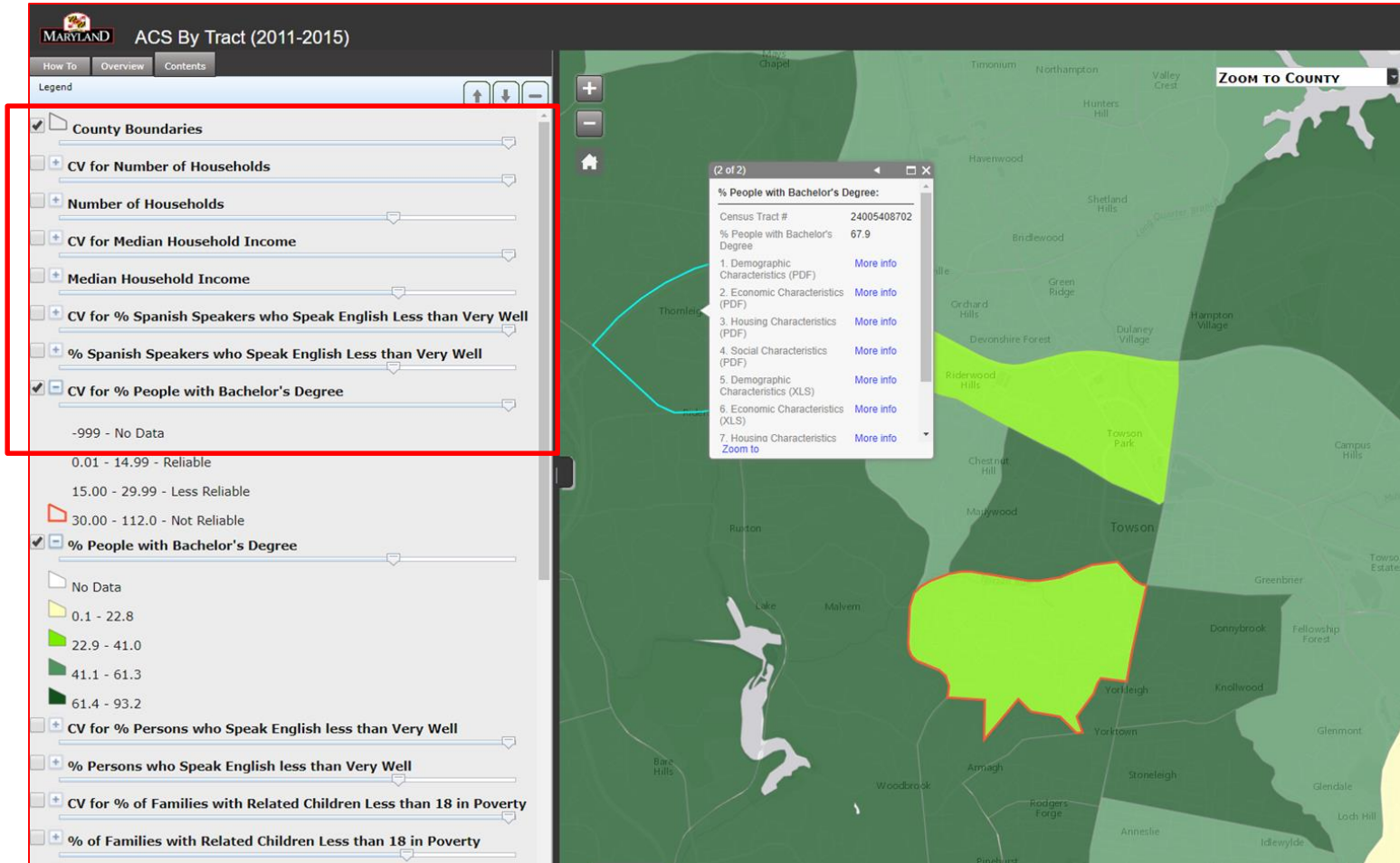
ACS by ZCTA

+

-

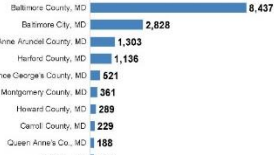
Home

INTERACTIVE CENSUS AND ACS MAP

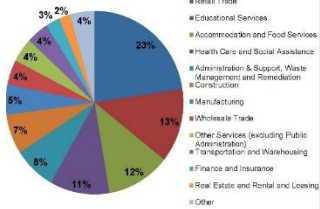


Work Area Profile for Dundalk/Edgemere

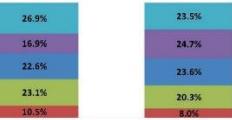
Where Workers Commute From who Work in Dundalk/Edgemere



Industry Sector for Jobs Located in Dundalk/Edgemere

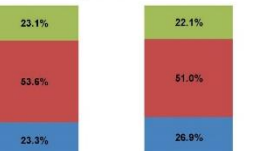


Worker Educational Attainment

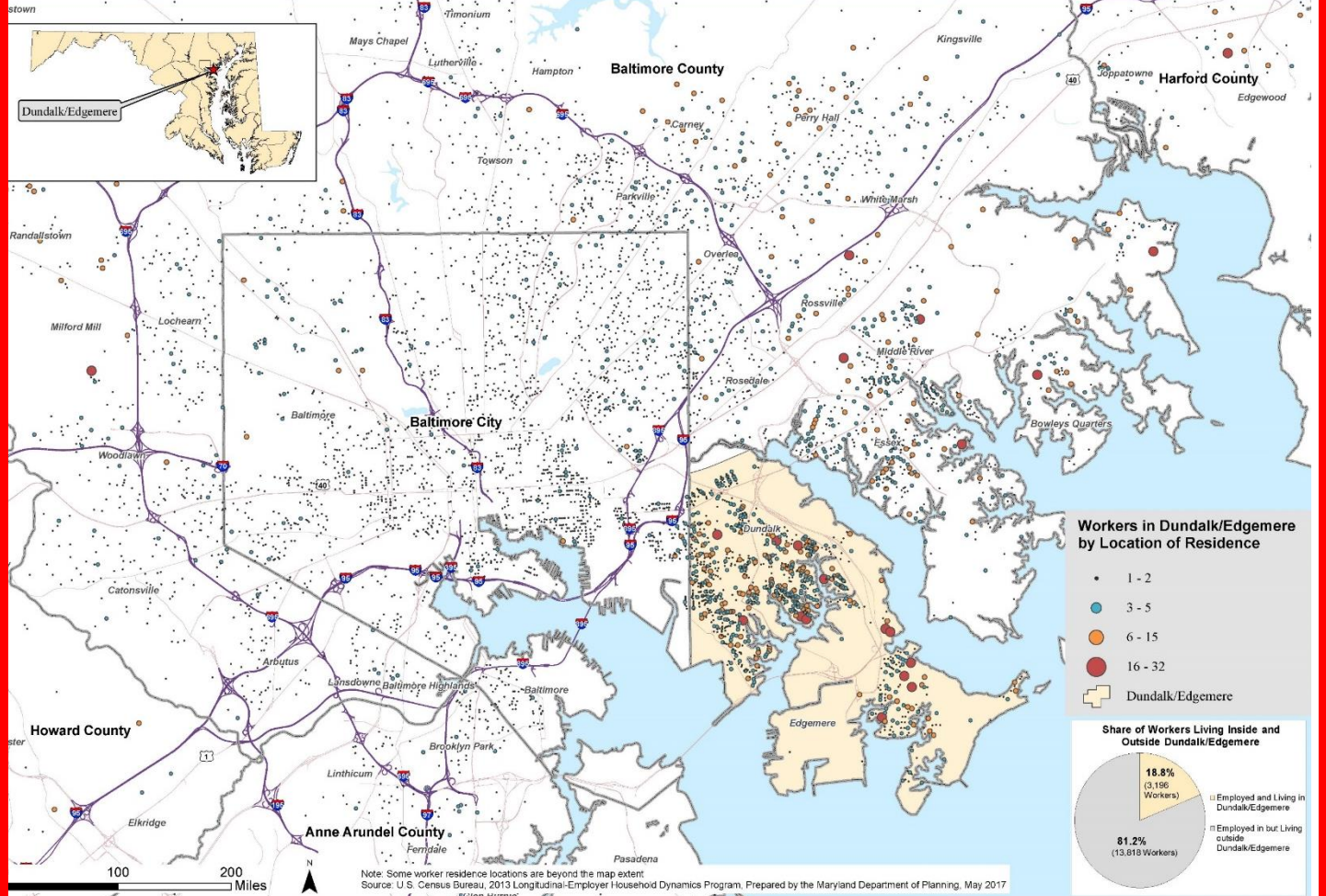


■ Educational attainment not available (workers aged 29 or younger)
■ Bachelor's degree or advanced degree
■ Some college or Associate degree
■ High school or equivalent, no college
■ Less than high school

Age of Worker



■ Workers age 29 or younger
■ Workers age 30 to 54
■ Workers age 55 or older





Department of Information Technology OPEN DATA PORTAL



SOCIAL MEDIA DIRECTORY

Search for Datasets, Maps, and Graphs



Local Data



data.maryland.gov

Welcome to data.maryland.gov, Maryland's Open Data Portal. This site is a central location for Maryland's public data, increasing government transparency and accountability by providing Marylanders with an unprecedented level of access to their state government.

**MARYLAND:
#1 in the U.S. for
our commitment
to Open Data**

Source: Center for Data Innovation



Maryland Real Property Assessments

Contains complete records from SDAT and MDP except for property owner names. Property owner name data are available by contacting service.desk@maryland.gov, signing up for a data.maryland.gov account, and agreeing to terms of use. Note that records shown here are updated approximately monthly, at different



Open Data For Maryland State Agencies - Version 1.3

This is a PDF document created by the Department of Information Technology to assist training Maryland state employees on use of the Open Data Portal. This document covers direct data entry, uploading Excel spreadsheets, connecting source databases, and



State Payments from 2008 to 2016

This dataset shows all payments made by state agencies from Fiscal Years 2008 to 2016 which were \$25,000 or more. All parties receiving funds are shown: private businesses and vendors, local governments, non-profit organizations, and individuals. If you have any questions please contact



Are our Datasets up to Date?

This dataset shows whether each dataset on data.maryland.gov has been updated recently enough. For example, datasets containing monthly data should be updated at least every 31 days. This dataset also shows a compendium of metadata from all data.maryland.gov datasets. This report is used during meetings of the Maryland Open Data

CONTACT INFORMATION

Alfred Sundara

Manager

Projections and State Data Center

(410) 767 4002

alfred.sundara@maryland.gov

Website

<http://planning.maryland.gov/msdc/>

